

ENGINEERED PRODUCTS: IGP-A RETROFIT KITS

APPLICATIONS

- Direct simplex replacement grinder for positive displacement grinder systems

FEATURES

- Fast, simple, and easy installation
- Epoxy-coated steel cover
- Watertight junction box for ease of installation
- 1-1/4" cast iron anti-siphon/check valve
- 1-1/4" NPT piping
- Adjustable alarm float switch preset at factory
- 2 hp 3450 rpm automatic grinder pump with mechanical float switch
- Quick disconnect plug
- Lightweight
- Rigid construction for ease of handling



IGP-A-RFK

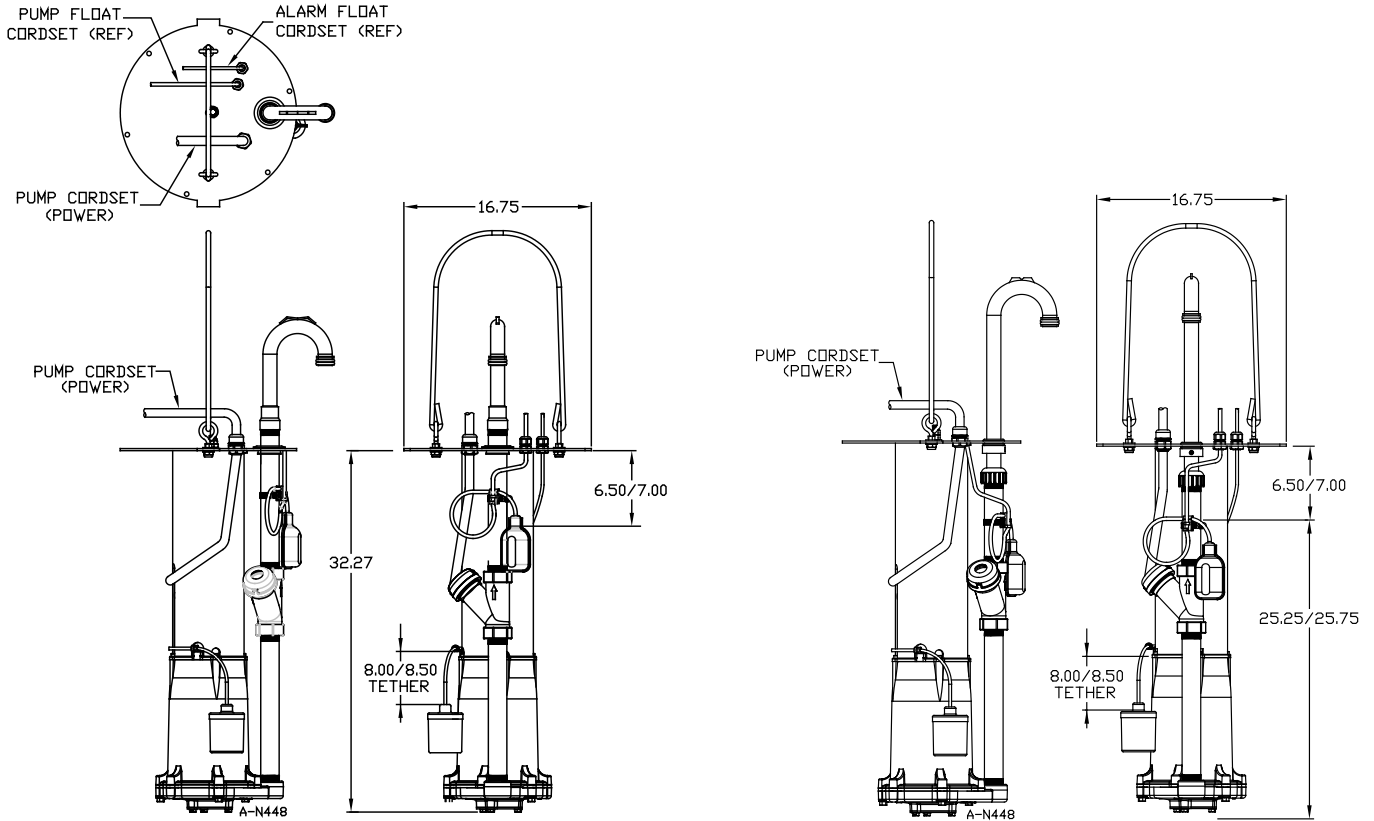
IGP-A-RFKT

CONSTRUCTION

Motor Cover	Cast iron with epoxy coating
Motor Cover O-Ring	Nitrile
Motor Design	Single-phase, capacitor start, capacitor run
Insulation Class	F
Overload Protection	Internal, on winding thermal protector
Motor Shaft	AISI 300 Series stainless steel
Ball Bearing-Upper	Single row ball, 6203
Ball Bearing-Lower	Single row ball, 6306
Seal Housing	Cast iron with epoxy coating
Mechanical Seal	Carbon/ceramic
Volute	Cast iron with epoxy coating
Impeller	Brass
Rotating Cutter	Multi-blade design, AISI 440C stainless steel, through-hardened to Rockwell 55-60C
Stationary Cutter	AISI 440C stainless steel, hardened to Rockwell 55-60C
External Hardware	300 Series stainless steel
Power Cable	Type SOOW/or SOW 14/3 AWG

ENGINEERED PRODUCTS: IGP-A RETROFIT KITS

ENGINEERING DATA



MODEL INFORMATION

Item No.	Model	Volts	Hz	Phase	Full Load Amps/Watts
515835	IGP-A-RFKT	208-230	60	1	13.9/3200
515836	IGP-A-RFK	208-230	60	1	13.9/3200

Performance (GPM @ Head)					Shut-Off	PSI	Weight (lbs)
40'	60'	80'	100'	120'			
31	30	25	20	10	130'	56	123

PERFORMANCE

