

Crystal Ball Plus

The Complete Monitoring Solution



Scan Here for
Virtual Manual

**Cellular Pump Station and Machinery
Monitor | Backup Pump Controller**

What it Does

The OmniSite Crystal Ball Plus doubles as both a **Cellular Pump Station and Equipment Monitor** and a **Backup Pump Controller**, making it the perfect solution for monitoring critical or remote applications.



Save Time and Money

The Crystal Ball Plus is easy to install and program. When an alarm occurs at a station monitored by a Crystal Ball Plus, you'll be notified within seconds – quickly enough to correct the situation and avoid costly problems. Our products and services are a fraction of the cost of alternative solutions. Why? Because we believe being on a tight budget shouldn't prevent you from accessing important tools in your industry.

Real-Time Data & Alerts | When You Need It. How You Want It.

OmniSite reports are sent every 24 hours with options to report every 5 or 15 minutes with Elite or Realtime Reporting or even instantly through GuardDog, our FREE monitoring software program. Receive alerts by **email, phone, text message, or any combination of the three**. It's your choice.

Fixed Cost Cellular Service

We use the largest wireless networks so your signal is strong and reliable. OmniSite was first to use cellular to monitor pump stations, freeing you from high-cost, high-maintenance, complicated, traditional SCADA solutions.

SPECIAL FEATURES



CUSTOMIZABLE I/O

Fourteen Universal Digital Inputs and accept 12 VAC/VDC – 120 VAC/VDC, and (4) 4-20mA analog inputs allowing you to wire up floats and sensors directly to your monitoring device.

BUILT-IN PUMP CONTROL

Four 20A @ 120VAC resistive Relay Outputs allow for backup pump control for 1, 2, or 3 pumps.

BACKUP BATTERIES

On-board 12 V battery means your device will continue to monitor and send alerts even if the main power is down.

How it Works

- 1 Your Crystal Ball Plus is installed at pump stations.
- 2 It sends a wireless signal to the local cellular tower.
- 3 That signal is bounced to OmniSite's web interface, where you can log on and see how each pump station is operating.
- 4 If an alarm or report is triggered at a pump station...
- 5 ...the identified operators are contacted immediately, via text message, email, or call



Works With



4-20mA Amp Probe

Monitor your power output with our 4-20mA Amp Probes. This current sensor will monitor AC motor amperage from 50-200 amps. The sensor outputs a 2-wire, 4-20mA signal, allowing you to know if a pump is

becoming clogged or failing. The sensors are a solid-core, where the conductor runs through the sensor.

Explosion Proof I-Level



This high-quality, submersible level probe is used to measure the water level in any sump pit, or tank where the water level does not exceed 20ft. Standard bottom weight allows the installer to sit the level probe on the bottom of the measured vessel, eliminating calibrating

offsets into the probe reading when it is suspended in fluid, and letting the user take as direct readings as the probe reads from the tank bottom.

The Crystal Ball Plus improvements and features

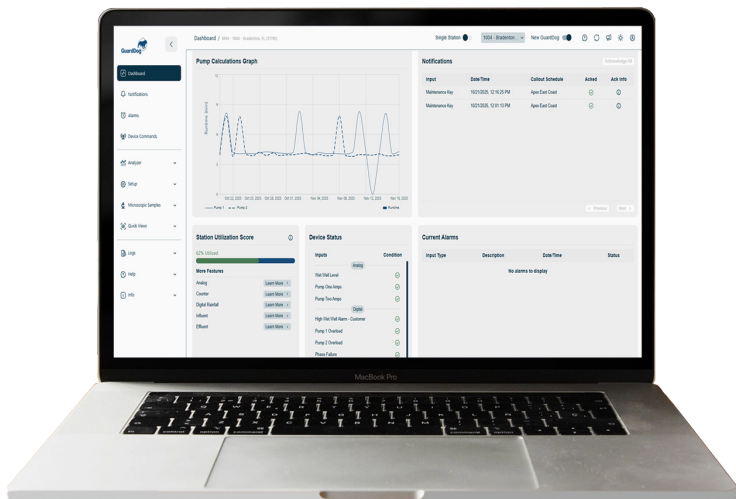
1. Due to needed improvements and parts going obsolete, OmniSite has redesigned the Crystal Ball and the XR50 to continue to support our customers for years to come.
2. The Crystal Ball Plus and XR50 Plus are drop-in replacement for the Crystal Ball and XR50 classic. No rewiring needed! New classic units will no longer be sold. Classic units sent in for repair, may be upgraded to a Plus unit if it is not repairable.
3. 24VDC courtesy voltage. This will allow the use of many two-wire 4-20mA devices without the need for a separate power supply. The digital inputs are still capable of 12 to 120 volts, AC or DC.
4. Reduced number of internal cables and connectors, improving reliability. The carrier board and connector board have been integrated onto the main board and the radio plugs onto the back of the main board.
5. Improved isolation on all four analog channels and the digital inputs.
6. Many internal circuits are redesigned for increased reliability and components changed to newer designs, extending the life of the Crystal Ball Plus.
7. Increased internal memory capacity to allow for additional features.
8. Over the air updates! When bugs are fixed and features are added to the Crystal Ball Plus, they will be able to be delivered over the air to the unit. **Note:** OmniSite will not install updates without first contacting and working with the customer.
9. The initial release of the Crystal Ball Plus and XR50 Plus will have the same features as the classic units. Many new features are planned and will be released as developed.
10. The Crystal Ball Plus and the XR50 Plus will be easily identified by the new yellow and black overlay.
11. The Unit ID number will be located on the front of the unit for easier identification.
12. In the near future, the units will be shipped with a larger backup battery. This saves you time, money, manpower, and frees you to focus on the bigger issues.

DEVICE SPECS

Power	12 VDC or 120 VAC
Communications	Cellular 4G 850/900/1800/1900 MHZ
Access Key	Smart security key to identify personnel on site
Terminal Blocks	Removable style accepts #14-18 AWG solid or stranded wire
Operating Temp	-20/150 Deg F
Operating Humidity	0-90% RH Non- condensing
Dimensions	8.9"H x 9.4"W x 3.5"D
Memory Stick	32Mb-1 Gb user selectable
LCD Display	Backlit 4 x 16
Keypad	(8) universal navigation buttons
Analog Inputs	(4) 4-20mA, isolated, 10 bit resolution
Relay Outputs	(4) 20A @ 120VAC resistive
Digital Inputs	(14) Universal Inputs accept 12 VAC/VDC - 120 VAC/VDC (3) Inputs covert into pulse counters
Protections	US Patent #7,228,129 and #7,778,633
Operating Systems OTA Updates	Yes, On Demand Only
External Power Source	24VDC @ 100mA

GuardDog

WEBBROWSER • MOBILEAPP



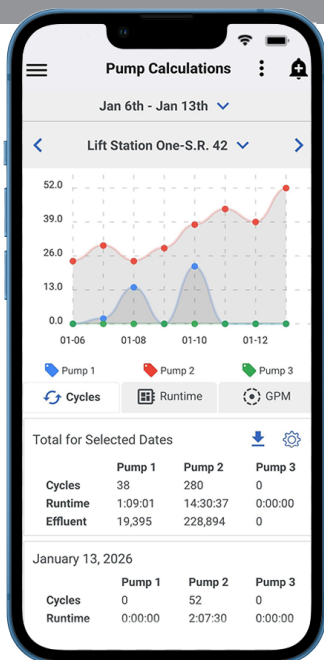
Our GuardDog software provides a powerful and intuitive interface which allows users to manage their systems, easily view alarms, and analyze trends for critical machinery & equipment.

The software is 100% web-based and is included FREE with every OmniSite device.

We've been in the water and wastewater monitoring industry for over 27 years. Our expertise in knowing what our customers need is demonstrated through the functions and features of GuardDog, a software that has set the industry standard for delivering important information when you need it.

Lift Station Management On-The-Go

GuardDog 2 is a companion app to our web-based interface. It allows access to equipment status from any one of OmniSite's alarm monitors. Using this app in combination with the GuardDog web interface makes it possible to monitor your equipment right from your pocket.

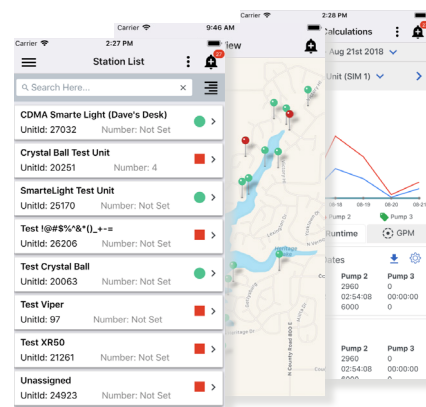


Packed with Features

With the GuardDog 2 Mobile App you can:

- Know the current condition of your stations
- Acknowledge current alarms
- Track GPMs, Runtimes, and other station trends with instantly generated reports
- Enable Map View to see the exact location of an alarm
- Send Remote Commands

Do this and more from anywhere by using your mobile device.



OMNISITE IS PROUD TO OFFER

- **FIRST-CLASS TECHNICAL SUPPORT**
 - **FREE IN-HOUSE TRAINING FOR ALL OPERATORS, TECHNICIANS, AND REPS**
 - **DESIGNED AND ASSEMBLED IN THE USA**
 - **FREE PRODUCT AND SOFTWARE DEMO**
-

The OmniAdvantage Plan

Put an end to repair and replacement costs. As an OmniAdvantage Plan member you get:

- Lifetime Product Updates
- Lifetime Radio Upgrades
- Free Software Upgrades and Full-Featured GuardDog 2 Mobile App
- GuardDog Web Browser Setup and Priority Support
- Professional Training
- Emergency Stock for your Stock Room
- Lifetime Warranty for OmniSites I-Level Well Level Probe

Want to learn more?

Contact one of our OmniAdvantage experts at 317-885-6330 ext: 137

Email sales@omnisite.com

Visit www.omnisite.com/omniadvantage

CONTACT US

ADDRESS

203 W. Morris St.
Indianapolis, IN 46225

PHONE

Sales : 317-885-6330 x 4
Support : 317-885-6330 x 3
Main : 317-885-6330

EMAIL / WEB

sales@omnisite.com
support@omnisite.com
www.OmniSite.com/products

©2026

Your Local Sales Representative is

Represented by



Envirep
(717) 761-7884
sales@envirep.com
www.envirep.com

A Division Of
CUMMINS-WAGNER
100% Employee Owned



OmniSite